

**Ryerson University**  
**Department of Electrical and Computer Engineering**  
**COE/BME 328 – Digital Systems**

---

**Message for TAs: Please ask and mark Johnson's counter after lab 5**

**Lab 4 - VHDL for Combinational Circuits and Storage Elements**

**15 Marks ( 2 weeks)**

**Due Date: Week 9**

**1 Objectives**

To construct combinational circuits and circuits with basic storage elements using VHDL

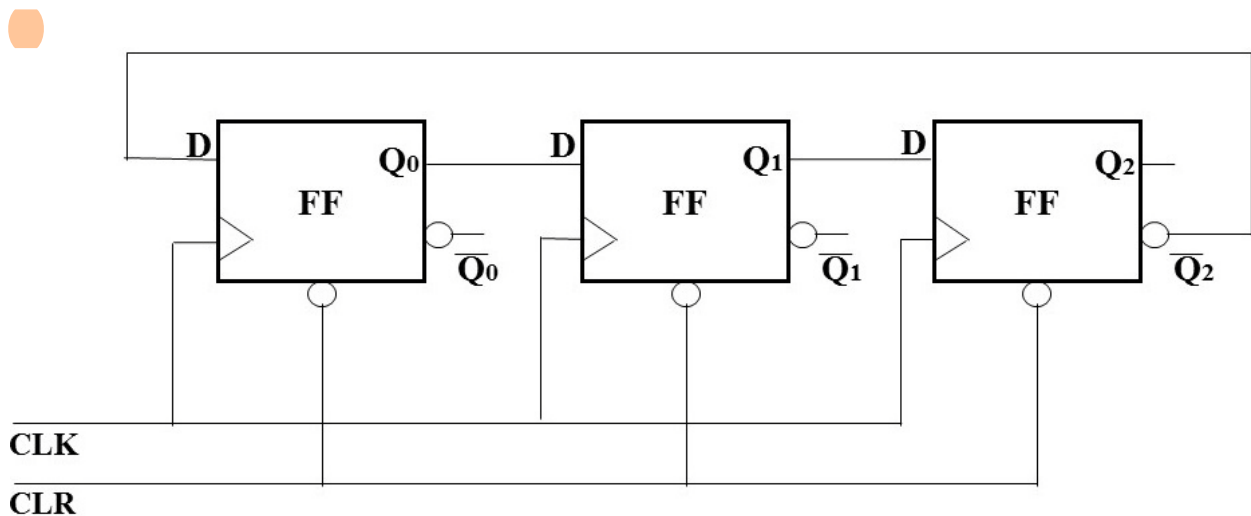
**2 Pre-Lab Preparation**

1. Start-up Quartus II. This window gives you access to an integrated suite of CAD tools
2. To save files for this lab, create subdirectories **mux**, **decode**, **encod**, and **johns** in your work directory.
3. Enter the name of the first project, **mux**, by clicking on File then Project on the pull down menu and then Name on the subsequent pull down menu. Type the Project Name, and click OK.
4. Open Text Editor and type the VHDL file from *Figure 6.28* of the textbook. Save the file as **mux.vhd**.
5. Start the compiler. Fix any errors and re-compile. Once the file compiles without errors, go to the next step. Copy the file *mux.vhd* to a usb drive
6. Repeat steps 3-5 for the remaining examples. Use files from the following figures accordingly (see textbook):
  - i. **decod** – Figure 6.30
  - ii. **encod** – Figure 6.41
  - iii. **johns** – Figure 2 (In this Manual)
7. The last example shows one of the ways of implementing the Johnson counter. The last six digits of the student identification number must be represented by a four-bit vector variable **STUDENT\_ID** which will be displayed cyclically in sequence with Johnson counter output. **Qreg** is an internal signal which can be fed back to the D's or fed out to **Q**.
8. Prepare a Truth Table for Johnson Counter for 6 clock cycles.

**3 Laboratory Work**

1. Create the subdirectory *lab4* in your work directory, and copy the all the subdirectories created as part of pre-lab to this subdirectory.
2. Compile your designs and create symbols for respective projects (**mux**, **decode**, **encod**, and **johns**) and save them.
3. Create new subdirectories inside lab4 folder of your working directory with names **muxModified** and **decodModified**.
4. Start-up Quartus II. This window gives you access to an integrated suite of CAD tools

5. Enter the name of the project, **muxModified**, by clicking on File then Project on the pull down menu and then Name on the subsequent pull down menu. Type the Project Name at top, and click OK.
  6. Create a block schematic file **muxModified.bdf** for the project defined in (12) and implement a **4:1** multiplexer using two **2:1** multiplexer (**mux** symbols) as shown in *Figure 6.3* of the text book.
  7. Repeat the steps 11-13 for the project **decodModified** and implement a **3:8** decoder using two **2:4** decoders (**decode** symbols) as outlined in *Figure 6.17* of the text book.
8. The circuit design must handle non-valid states and non-valid student identifier cases by displaying an “E” in the seven segment display on your simulated waveforms.
9. Consider the last 6 digits of the student identifier  $D = \{d_1, d_2, d_3, d_4, d_5, d_6\}$  in its general representation. Then, as an example, a student with identifier: **500435429** will follow the display sequence as **435429**.



```

LIBRARY ieee;
USE ieee.std_logic_1164.all;
ENTITY johns IS

PORT (Clr_n, E, Clk_n : IN STD_LOGIC; --clr_n is your reset button
      STUDENT_ID : out  std_logic_vector(3 downto 0);
      Q : OUT STD_LOGIC_VECTOR (0 TO 2));
END johns;

ARCHITECTURE Behavior OF johns IS
signal Qreg : STD_LOGIC_VECTOR (0 TO 2);
BEGIN
    PROCESS (Clr_n, Clk_n)
    BEGIN
        IF Clr_n = '0' THEN
            Qreg <= "000";
        ELSIF (Clk_n'EVENT AND Clk_n = '0') THEN
            IF E = '1' THEN
                .. -- complete your johns flip-flop outputs here..
                ..
                Qreg(1) <= Qreg(0);
                ..
                ..
            ELSE
                Qreg <= Qreg;
            END IF;
        END IF;

        -- STUDENT_ID variable represents the last 6 digits of your student ID
        -- hence d4 is the fourth digit of your
        -- student ID in four bits, d5 is the fifth and so on. For example, for
        -- Student ID 500435429,
        -- d4 is 0100, d5 is 0011 and so on
        CASE Qreg IS
            WHEN "000" =>
                STUDENT_ID <= ..... --d1
            WHEN "100" =>
                STUDENT_ID <= ..... --d2
            .
                ..d3
            .
                ..d4
            .
                ..d5
                ..d6
            WHEN OTHERS => STUDENT_ID <= "----";--error
        END CASE;
    END PROCESS;
    Q <= Qreg;
END Behavior;

```

Figure 2: Code Template for Johnson Counter to sequence STUDENT ID

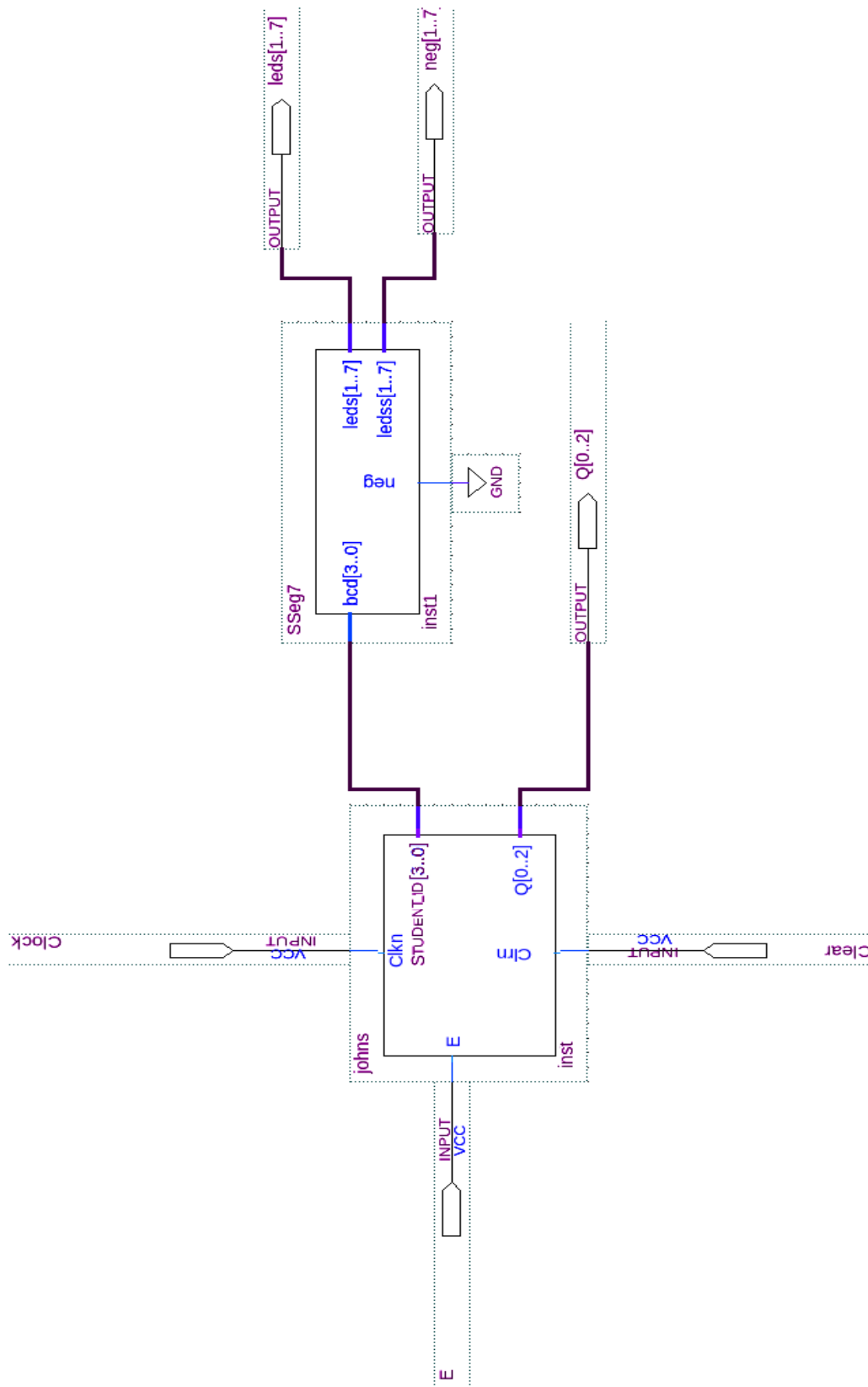


Figure 3: Typical Schematic produced using Quartus II